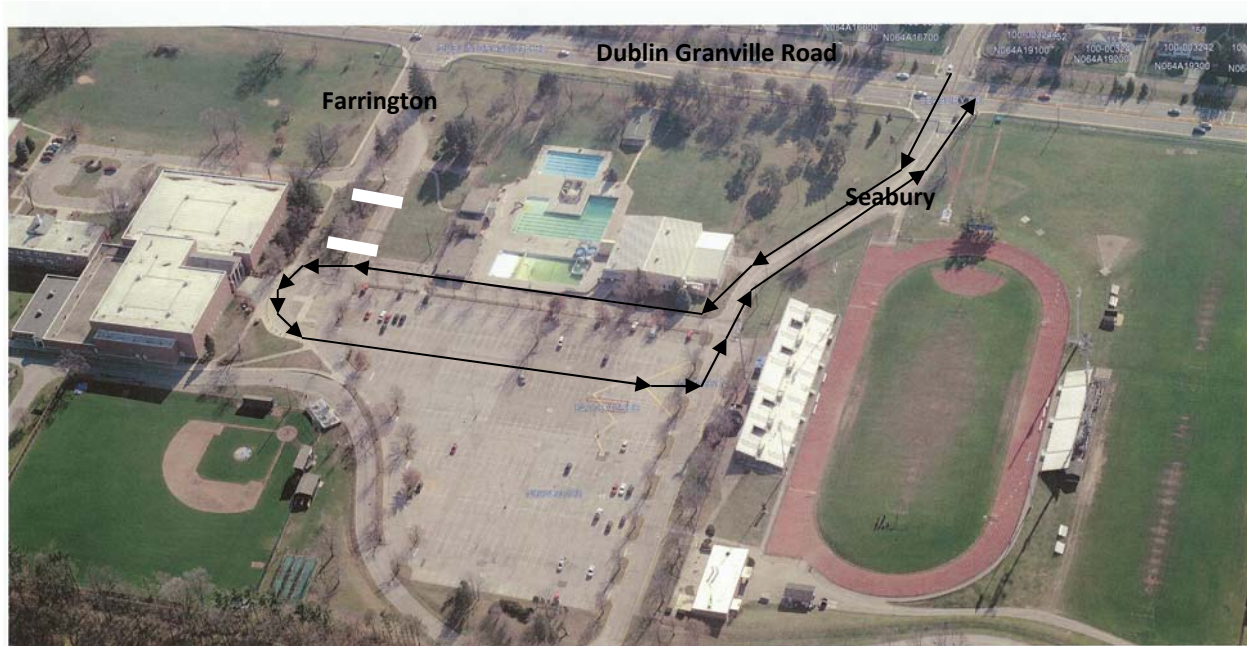


TWHS Parking and Traffic Guidelines



Guidelines for parking and traffic patterns to be used for student pick-up and drop-off are provided below. Students are encouraged to arrive early in order to avoid the most heavily congested traffic that occurs between 7:20 a.m. – 7:45 a.m.

BEGINNING AUGUST, 2010 - For safety purposes, the white gates on Farrington will be closed at 7:00 a.m. and will re-open at the end of the school day. Please follow these guidelines for traffic at TWHS:

Student Drop-Off (7:00 a.m. – 8:00 a.m; 2:00 P.M. to 3:30P.M.) (WEST LOT)

1. Enter through the stadium entrance (Seabury entrance).
2. Turn right onto the *one way service* road in front of the Natatorium.
3. Continue on the one way service road toward the school. Students may be dropped off anywhere along this road.
4. Continue around the loop on the west end and proceed slowly straight through the parking lot toward the stadium.
5. Turn left on Seabury and return to Dublin-Granville Road.

Student Pick-Up between 8:00 a.m. - 2:00 p.m., during the school day

In the event a student needs to be picked up during the school day, parents/guardians should pick up their child up at the main entrance (flag pole). We ask that you park in one of the 12 designated visitor parking spaces. **Please do not park or stand idle in the loop area or any yellow painted areas.** For safety purposes this loop area has been designated as a fire lane and must remain clear of cars at all times. The visitor parking spaces are conveniently located on the west side of the parking area.

AREAS NOT TO BE USED FOR STUDENT DROP-OFF OR PICK-UP BEFORE OR AFTER SCHOOL:

1. **PARKING AREA OR LOOP IN FRONT OF MAIN ENTRANCE (SOUTH LOT)**
2. **EAST SIDE OF BUILDING BY DOOR 8, 9 OR 10 (EAST LOT)**
3. **BUS LOOP (NORTH LOT)**
4. **STAFF PARKING LOT OUTSIDE OF MUSIC ROOMS (NORTH LOT)**

At the end of the school day, you may either line up in the west end loop and along the one-way service road by the Natatorium, or you may sit and wait safely for your child in a designated parking space in the student lot. To wait in a parking space, instead of utilizing the service road in front of the Natatorium, enter Row 1 or 2 by turning right. Designated parking spaces will be found in Rows 1B and 2A, spaces 1-14. Parents/guardians can park in the space to wait for their child for a lengthy period of time.

PARKING IN THE NORTH, SOUTH OR EAST LOTS OR DRIVEWAYS WHILE WAITING FOR SCHOOL TO END IS PROHIBITED. PLEASE USE THE WEST LOT OR NATATORIUM DRIVEWAY.