

Worthington City Schools

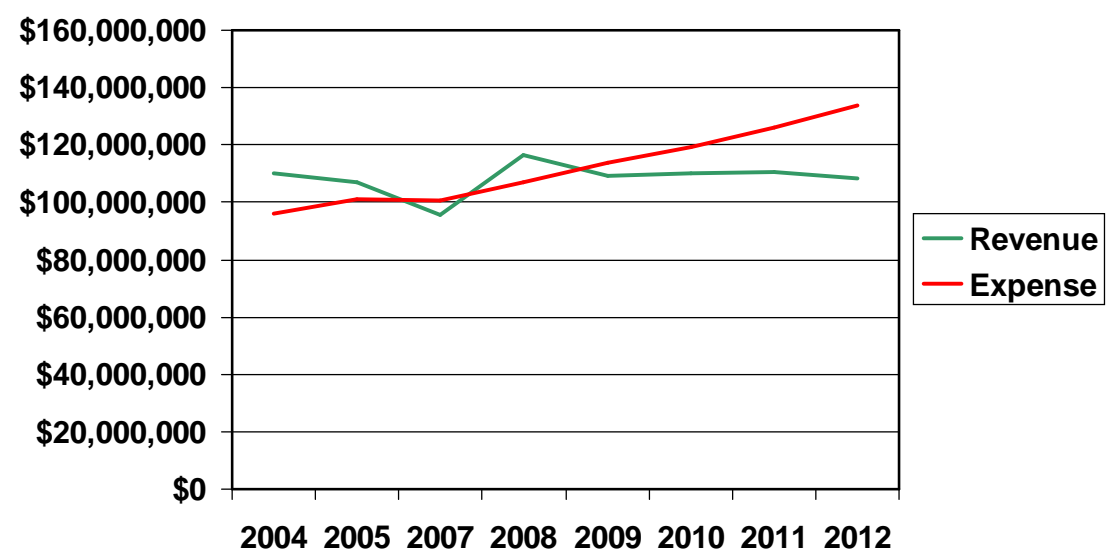
Levy Options & Timing
February 11, 2008



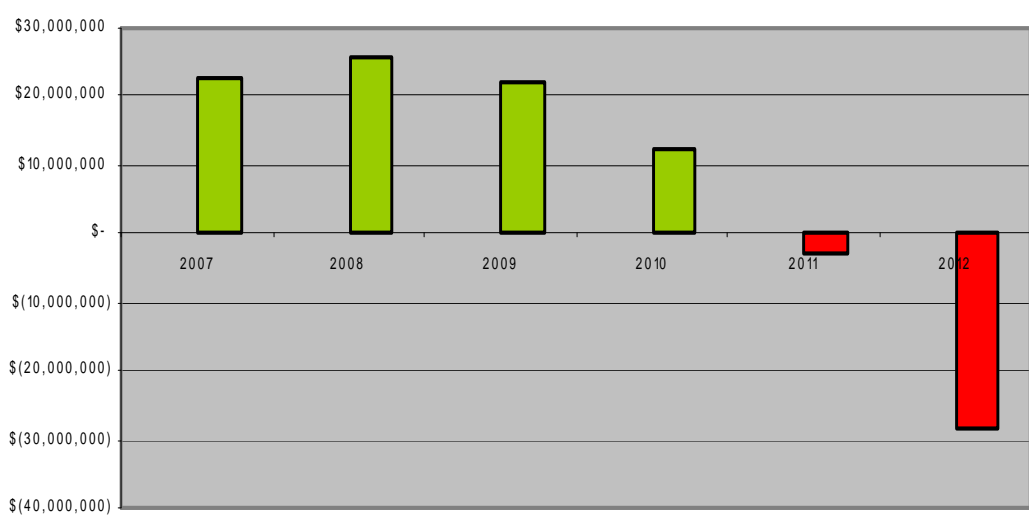
General Fund Revenues and Expenditures

Fiscal Years 2004-2007 Actual

Fiscal Years 2008-2012 Projected



Worthington Schools Forecasted Ending Balances

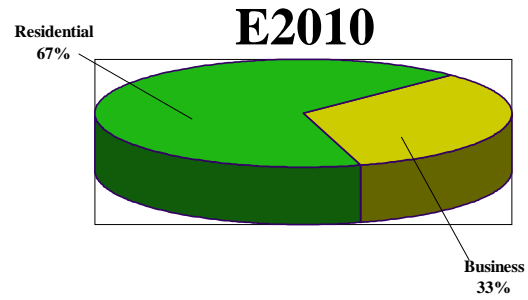
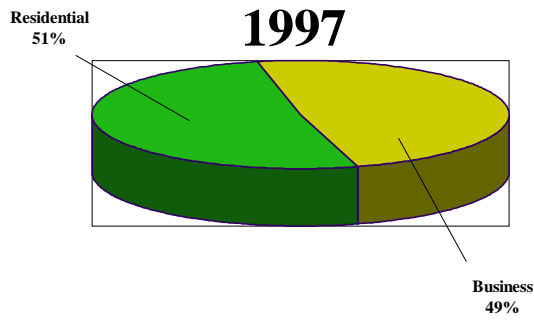


Levy Types to consider



- Traditional property tax
- Incremental property tax
- Income tax
- Earned income tax

Property Tax History





Property Tax

- Advantages
 - Voter knowledge
 - Consistent revenue stream
- Disadvantages
 - Increases burden on fixed income families
 - Revenue does not grow

Property Tax Amounts



\$200,000 home

6.4 Mills

\$200,000 value

X 35%

\$ 70,000 Assessed value

X .0064 Millage

\$ 448.00 Property tax

X 87.5% Homestead

\$ 392.00 Homeowner cost

7.9 Mills = \$ 483.87



Income Tax

- Advantages
 - Reduces burden on fixed income families
 - Revenue grows with community economy
- Disadvantages
 - Business does not pay tax
 - Higher cost and longer time to collect
 - Revenue is difficult to project



Income Tax Amounts

- \$ 65,000
 - Taxable Income
 - 6.4 mills = .75% or \$487.50
 - 7.9 mills = 1% or \$650.00
 - Earned Income
 - 6.4 mills = 1% or \$650.00
 - 7.9 mills = 1.25% or \$812.50

- Ohio Revised Code 5748 requires .25% increments

Worthington Schools

Levy timing



- History of Successful Operating Levies
 - 6.85 March 2004
 - 6.29 May 2001
 - 6.40 November 1994
 - 9.70 February 1991
 - 6.60 November 1987
 - 5.50 November 1982

Economic Factors

Federal slowdown in growth
Unemployment increase
Housing foreclosures
Governor's projected deficit

When will this turn around?





Financial Factors

- 6.4 – 7.9 Property tax / .75 – 1% Income tax
- 3 year levy cycle

- Is this reasonable for the Worthington community?
- Is this sustainable for the Worthington community?



Crucial Dates

- Property tax levy May 2009
 - January 2009 file resolution of necessity with county auditor
 - 2/19/09 File election proceedings with board of elections
- Income tax levy May 2009
 - January 2009 file resolution of necessity with county auditor
 - 2/9/09 File election proceedings with board of elections